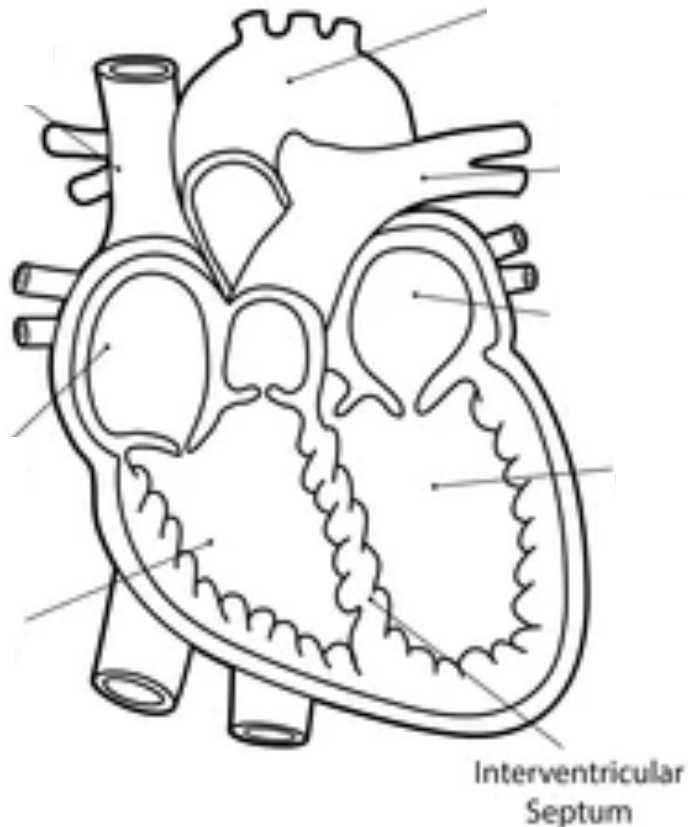


## HEART ANATOMY



- 1.
2. What is the function of the heart?
3. What is the heart made of?
4. Which is the right and left side of the heart? (this often confuses people - it is not as you are looking at it, but as if it were inside your body!)
  - a. Colour the right-side blue
  - b. This is deoxygenated blood - what does this mean?

- c. Colour the left-side red
  - d. This is oxygenated blood - what does this mean?
5. Turn back over and label the diagram with arrows to show the direction that blood moves through the heart. Start at the Vena Cava (the main vein).
6. What does blood transport?

## Extension Questions

7. Why does blood need to go to the lungs first?
8. Why does blood go back to the heart?
9. What is cellular respiration? (hint - it is NOT the same as breathing!)
10. Why does heart rate increase when we exercise?