



SIXTH FORM

AT LEIGHTON PARK



PROSPECTUS 2026

LEIGHTON PARK SIXTH FORM AT A GLANCE



195 SIXTH FORM STUDENTS WITH AVERAGE CLASS SIZE OF 7



WINNER OF THE NATIONAL ISA 2023-24 SENIOR SCHOOL OF THE YEAR AWARD



IB DIPLOMA OR A LEVEL



WINNER OF THE NATIONAL ISA 2024-25 AWARD FOR FUTURE READINESS



STUDENTS ACHIEVE THE BEST ACADEMIC PROGRESS IN BERKSHIRE (VALUE-ADD)



45 DIFFERENT NATIONALITIES



68% A*-B AT A LEVEL AND IB AVERAGE OF 36 POINTS (2025)



WINNER OF ISA 2022 EXCELLENCE IN PUPIL PERSONAL DEVELOPMENT



SCHOOL CELEBRATED BY ISI IN JAN 2025 FOR 'SIGNIFICANT STRENGTH': OUR VALUES



90+ CO-CURRICULAR OPTIONS



NEW SIXTH FORM STUDY CENTRE 2024



CAS AND OAKLEAF DIPLOMA DEVELOPMENT PROGRAMMES

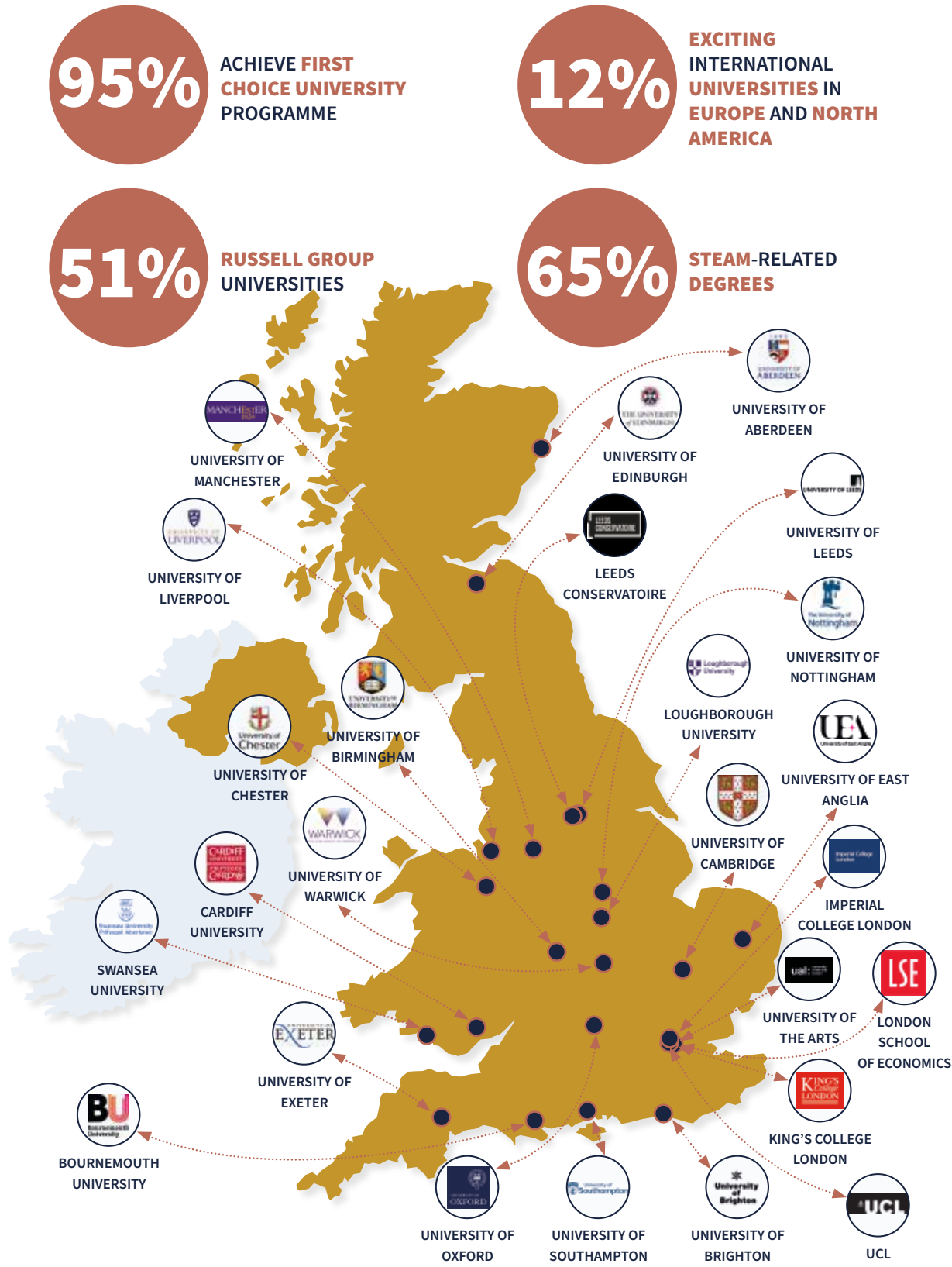


CAREERS PATHWAYS FOR OXBRIDGE, MEDICINE, LAW AND OVERSEAS UNIVERSITIES



DAY, WEEKLY AND BOARDING PLACES AVAILABLE

STUDENT DESTINATIONS





WELCOME TO THE LEIGHTON PARK SIXTH FORM

We won the national Senior School of the Year Award in the Independent Schools Association Awards 2023-24. We're also the top performing Sixth Form in Berkshire for the academic progress our students make and 14th among boarding schools in England. What we love most about this is that it proves that you don't have to spend your life memorising facts and doing endless tests to achieve top results. Our approach shows that balancing high-quality learning (and yes - hard work!) with fun, living adventurously, sports, performing arts, off-curriculum projects and helping others is the best way to achieve academic success.

We want you to really love your learning. We prioritise experiential learning and getting out of the classroom, with a focus on creative problem-solving, interdisciplinary and project-based learning. Equality is one of our core values, so you can call your teachers by their first names and be sure that they'll be by your side to support and guide you. The teachers lead the classes but everyone's opinion is important.

We offer two different programmes, the IB Diploma and A Levels, so you can pick the one that works best for you. You can build your own programme with over 90 co-curricular options and leadership and development opportunities at every stage. Ultimately, we want you to think about who you are and what you want - and then we'll do everything we can to help you achieve your goals.

Education is a partnership - so we're looking for people willing to give their all, to challenge themselves and lift those around them. Our vibrant learning community is a space where you can be yourself, and succeed as yourself.

Helen Taylor

Director of Sixth Form



"You'll flourish academically
and as an individual,
supported by an exceptional
values-led education,
sector-leading personal
development
and an award-winning,
future-ready curriculum."

Luke Walters
Head of Leighton Park

STUDENT CASE STUDIES



RIO

**43 POINTS ON IB
MEDICINE
UNIVERSITY OF EDINBURGH**

"Leighton Park offers something very special, from its acceptance and community to the wide range of opportunities for everyone. LP offers a great deal of support, and I am immensely thankful for it. I truly believe the way it has pushed me has allowed me to thrive."



Discover the
International
Baccalaureate
at Leighton Park



MIA

**A*, A*, A* AT A LEVEL WITH
A B AT EPQ
ART AND TECHNOLOGY
AT UCL**

“Being able to study at Leighton Park these past years is something that I’ll always be grateful for. LP gave me the opportunity to explore extensive possibilities with my studies and extracurricular interests through its supportive environment. One thing that stands out to me is the community, with my teachers and friends making my time at LP continuously inspiring and enjoyable.”



ESTHER

**A*, A*, A AT A LEVEL
WITH A* FOR EPQ
MUSIC
UNIVERSITY OF OXFORD**

“I am endlessly grateful for my time at LP. It gave me the space to learn who I am, and the community to support me in doing so. It is a very special place and I know my years at the school will be forever treasured.”



CEM

**A*, A*, A*, A* AT A LEVEL
ENGINEERING
UNIVERSITY OF CAMBRIDGE**

“Studying at Leighton Park has been an incredible journey for me. I enjoyed every phase of it. I’ve had the privilege of meeting creative students and dedicated teachers who helped me think critically and deeply about myself and my subjects. The supportive community and enriching environment have made my time at Leighton Park truly unforgettable. I am grateful for the experiences and friendships I have gained.”



AHMER

**A*, A*, A*, A AT A LEVEL WITH
AN A* FOR EPQ
MEDICINE, IMPERIAL COLLEGE**

“Sixth Form at Leighton Park is a truly unique experience. In the classroom, teachers push you to your academic limits and provide support to develop you beyond them, fuelling a life long passion for your subjects and helping you achieve to the best of your ability. We are encouraged to think ‘outside the box’, beyond the syllabus and research topics of interest. Not only does Leighton Park develop you academically but also as a person.”



ELOISE

**38 POINTS ON IB
GAME DESIGN AND
DEVELOPMENT
LONDON SOUTH BANK
UNIVERSITY**

“I can honestly say that Leighton Park was a truly invaluable opportunity for developing my personal interests. Before attending I struggled to decide on a direction for my future, however the vastness of available activities, such as clubs, concerts and school productions, helped me to realise my potential within the arts. Being able to take the IB meant that I could leave my options open in terms of further study.”



QAYYUM

**A*, A*, A*, A AT A LEVEL
COMPUTER SCIENCE
UCL**

“I’ve had the privilege of learning alongside open-minded peers and dedicated teachers who have not only boosted my confidence but also helped me build a strong foundation of knowledge that will stay with me forever. What sets Leighton Park apart is the friendly and supportive relationship between students and teachers, which has made my learning experience truly enjoyable.”



Find out more
about A Levels at
Leighton Park



ROWAN

**42 POINTS ON IB
HUMAN SCIENCES,
UCL**

“As the IB allowed me such a wide range of subject choices (and as I generally enjoyed them) I knew that I wanted the same breadth in my future university course, The Human Sciences course therefore seemed perfect to me as it combined several of my favourite subjects and required skills I had already learnt in the IB.”



RHYS

**A*, A*, A* AT A LEVEL WITH
AN A FOR EPQ
ACCOUNTING AND FINANCE
AT LSE**

“I joined Leighton Park in Year 12 and have been so impressed with the teaching support as well as the teaching quality throughout my two years. I also think the boarding house did a great job in creating an environment where I could prosper. As a boarder I could create meaningful relationships with staff as well as enjoy lots of activities when I was not studying. I also made great friends along the way! I’d like to thank Leighton Park for an amazing two years!”



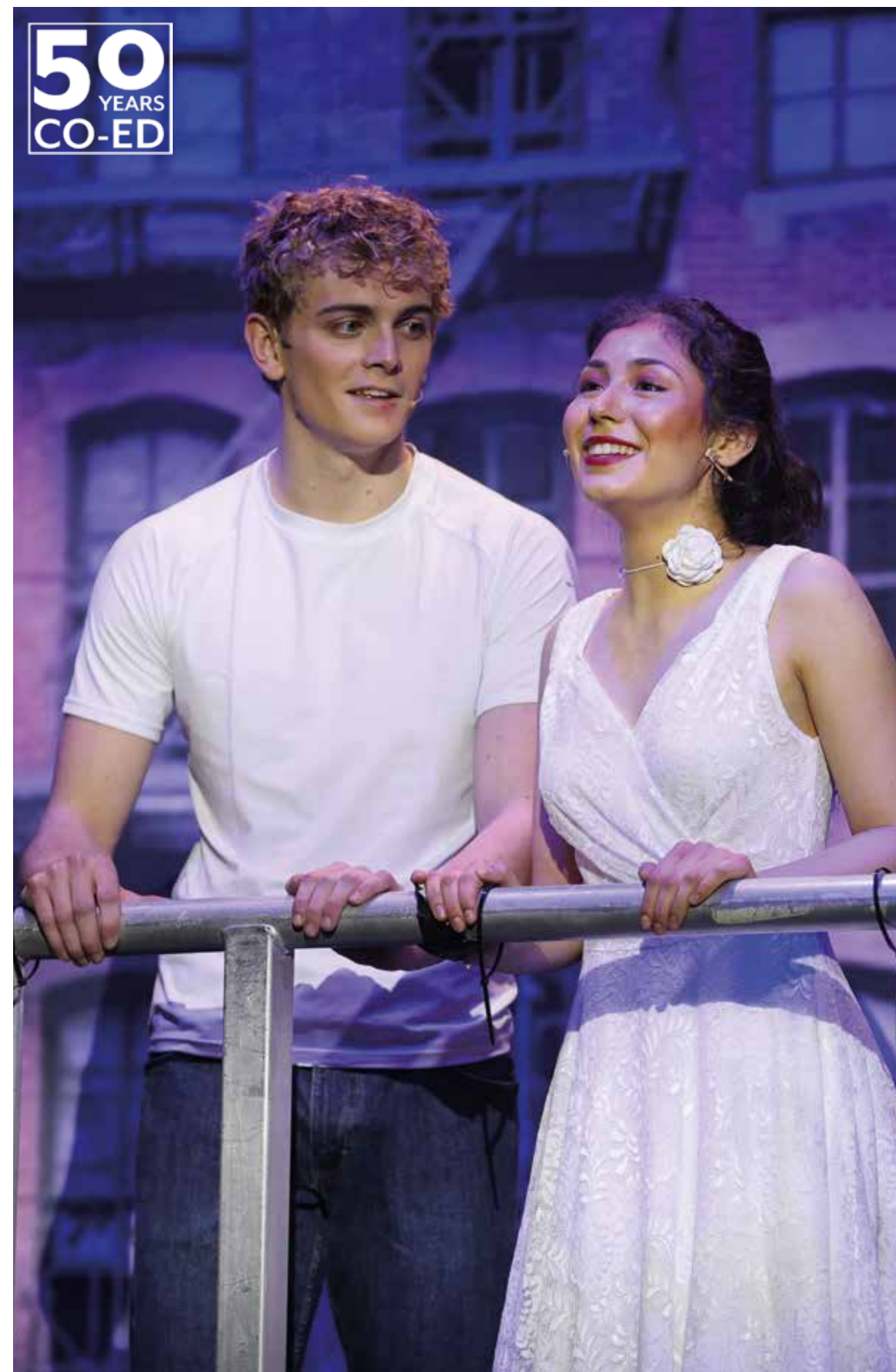
GUERAU

**A*, A*, A AT A LEVEL WITH
AN A AT EPQ
MECHANICAL ENGINEERING
UNIVERSITY OF BATH**

“I am very happy to have studied at Leighton Park. The teachers have supported me all the way through and have helped achieve what I want. It’s an incredible environment, very respectful and welcoming, and I have personally developed a lot these past 4 years. I have really enjoyed my time here at Leighton Park.”



Explore the
Extended Project
Qualification at
Leighton Park





WHAT CAN I STUDY?

We offer the International Baccalaureate Diploma as well as A Levels in the Sixth Form. There is a lot of choice across these different programmes, with some exciting BTECs offered alongside the A Levels.

Entry into the Leighton Park Sixth Form requires a minimum of five GCSE/iGCSE passes at Level 6 or above, or equivalent overseas qualifications. Some Sixth Form subjects have additional entrance requirements. These are listed in the table on page 11. We want anyone who can benefit from our vibrant learning environment to be able to gain a place. These minimum requirements are the level at which we believe students will be able to access the curriculum at the pace at which it is taught at Leighton Park.

International students will sit entrance assessments to gauge their level of attainment.

The table opposite summarises the GCSE/iGCSE entry requirements to study specific subjects at A Level or IB. These requirements are not absolute and equivalent qualifications or evidence will be considered. Subjects may vary from year to year depending on demand.

“Pupils take initiative in their learning, demonstrate autonomy in completing tasks and approach complex projects with confidence.”

Independent Schools Inspectorate, published January 2025



| Subject | Specific Entry Requirements | A Level | IB |
|---------------------------------------------------------|----------------------------------------------------------------------------------------------------|-------------|----|
| Art | a grade 6 required in Art | ✓ | ✓ |
| Biology | a grade 6 in Biology or 7 in Combined Science | ✓ | ✓ |
| Business | a grade 6 in English and Maths | ✓ | ✗ |
| Chemistry | a grade 7 in Chemistry or 8 in Combined Science | ✓ | ✓ |
| Chinese | a grade 6 in Chinese, Chinese to be first language | ✓ | ✗ |
| Computer Science | a grade 6 in Computing or an aptitude for programming | ✓ | ✗ |
| Dance | a grade 6 required in Dance | ✓ | ✗ |
| Design and Technology Product Design | grade 6 in Design and Technology, or Engineering as well as a Grade 6 in Maths | ✓ | ✗ |
| Digital Film and Video Production Level 3 (BTEC) | Previous knowledge of Media/ Media Production desirable, grade 6 in GCSE Media an advantage | BTEC | |
| Drama and Theatre Studies | a grade 6 in Drama | ✓ | ✗ |
| Economics | a grade 6 in English and Maths | ✓ | ✓ |
| English Literature | a grade 6 in English Literature and English Language | ✓ | ✓ |
| French | a grade 6 in French | ✗ | ✓ |
| Further Mathematics | a grade 8 in Maths. An additional standalone qualification in Maths is also desirable | ✓ | ✗ |
| Geography | a grade 6 in Geography | ✓ | ✗ |
| History | a grade 6 in History | ✓ | ✓ |
| Mathematics | a grade 7 in Maths | ✓ | ✓ |
| Music | an in-depth knowledge of Music. Grade 5 Theory desirable | ✓ | ✓ |
| Music Technology | a grade 6 in Music is required or significant experience with Music Technology software | ✓ | ✗ |
| Physics | a grade 6 in Physics or a grade 7 in Combined Science and ideally a grade 7 in Maths | ✓ | ✓ |
| Politics | a grade 6 in English | ✓ | ✓ |
| Psychology | a grade 6 in English and Maths | ✓ | ✓ |
| Religious Studies | a grade 6 in English and Maths | ✓ | ✗ |
| Spanish | a grade 6 in Spanish | ✗ | ✓ |
| Sport & Physical Activity | a Grade 5 at GCSE PE is desirable | CTEC | |



10 REASONS TO CHOOSE THE LEIGHTON PARK SIXTH FORM

1. High achievers, naturally

We'll support you to harness your innate inner-drive to achieve the very best you can.

Leighton Park Sixth Formers achieve the best academic progress in Berkshire. We are one of only eight schools to have always been in the top 100 performing schools in England in the UK Government's value add analysis - but we are no academic hot house.

We achieve this through exceptional teaching in small classes, fun and engaging lessons and a holistic approach to support personal development as well as academic progress. Above all, we'll support you to really think about what you want to achieve, foster your inner drive and help you find purpose in your learning.

We believe that achievement shines brightest when it spans across the different facets of a student's character and when it flows from your deep desire to develop and grow.



"The Sixth Form has been amazing, just everybody. Before she came here we never thought she could get what she's got. They believed in her and that made her believe in herself. I don't think she'd have been in the position she's in had she not come to Leighton Park."

Leighton Park parent

2. Choose between IB Diploma or A Levels

You are unique, with your own interests, approaches to learning and strengths. We offer two different world-class Sixth Form programmes to enable you to choose the option that will best suit your needs and goals. The attributes listed below are a good guide to which programme might suit you best - which one do you resonate with? If you're still not sure, get in touch and we'll be happy to guide you.

IB Diploma student

- You have broad interests and like working on projects
- You are interested in global perspectives and culture
- You don't want to narrow your options down at this stage of your education
- You want to have more contact time with teachers
- You like the interdisciplinary nature of the IB Diploma and the opportunity to explore open-ended questions with more scope for creative thinking
- You enjoy that you can gain credits for your co-curricular activities
- You relish the prospect of being part of an international programme, having friends from different countries and being part of a cosmopolitan cohort
- You're excited that 97% of university admissions officers rate the IB Diploma as the best preparation for university.

A Level student

- You have refined your interests into specific subjects and want to focus on these
- You prefer to be assessed in exams rather than coursework and feel confident that you can cope with that pressure
- You enjoy that the A Level syllabus is more defined and that subjects are studied independently of each other
- You have a clear idea of what you want to do after school
- You are interested in undertaking the Extended Project Qualification (EPQ) as an opportunity to work independently and focus on a topic that really fascinates you
- You feel that you have excellent time management skills to use study periods effectively.

Find further details about the IB Diploma and A Level programmes on pages 28 and 29



Myth busting the IB Diploma vs A Levels

There is more work on the IB Diploma

Students on the IB Diploma study six subjects compared to three or four for A Level students. But these six options each have less content than an A Level. Students study three subjects at Higher Level maintaining academic rigour and three at Standard Level, developing breadth. A Level students at Leighton Park are also strongly recommended to undertake the Extended Project Qualification (EPQ) to support their university applications. Students will need to study hard on either programme to do well.

The IB Diploma is not suitable for Medicine

As one of the country's leading schools for STEAM we can say with confidence that the IB Diploma programme is excellent preparation for studying Medicine at university, both in the UK and internationally.

The IB Diploma only suits linguists

IB Diploma students do have to study a different language as part of their programme but as with all our courses, you will be fully supported by language specialists and there are options for you to choose the language that suits you best. We also offer the option to study a language 'ab initio' meaning that even if you have not studied a language before you can still take the IB Diploma.



A Level students have more free time

IB Diploma students have more classroom teaching, while A Level students have more independent study periods. It is vital that students use these periods effectively if they are to achieve good results - they are not free time! If you prefer to have more teacher support then the IB Diploma might be a better option.

A Levels are better for applying to UK universities

This used to be the case but UK universities now fully recognise the value of the IB Diploma. In a sector survey, University Admissions Tutors confirmed that the IB Diploma provides excellent preparation for university and the world of work, with 97% saying it is the best preparation for university study. From our recent experience IB Diploma students enjoy a slight edge over A Level students. An example would be leading university courses that require three A*'s at A Level or 37 points out of 45 on the IB Diploma - a much more achievable score.

A Levels are narrow and limit your options

Studying three or four A Levels in depth does limit your options more than studying the IB Diploma but there are examples of where having this level of focus is valuable, for example if you want to study Maths at a leading university. The EPQ and co-curricular programme also enable you to add more breadth to your studies.

“With its blend of breadth and academic rigour and focus on developing students that are not only thinkers and inquirers but also open-minded and excellent communicators, there is no better preparation for the future than the IBDP.”

Kees Lutejin, Director of IB



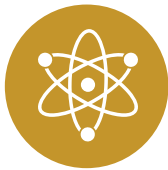
3. A focus on creative problem-solving

Leighton Park is committed to giving you an holistic education with strength and breadth across academic disciplines, but we are particularly well-known for our strength in interdisciplinary, creative problem-solving with 65% of our Upper Sixth leavers going on to STEAM-related degrees.

We will give you access to a number of industry and higher education partners to give you real world insights into the problems facing society today. Our STEAM Innovation Hub is home to guest speakers and workshops, as well as Club STEAM - which aims to give students the skills to take an idea and make it fly.

Top academic progress for STEAM

Our Sixth Form students achieve outstanding academic progress across the STEAM disciplines, placing our value-add amongst the very best in the country.



Adding 1.34 of a grade in Physics



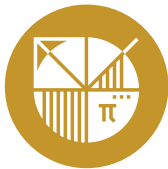
Adding 1.2 of a grade in Biology



Adding 1.18 of a grade in Maths



Adding 1.07 of a grade in DT



Adding 0.99 of a grade in Further Maths



Adding 0.83 of a grade in Computer Science



Adding 0.74 of a grade in Chemistry



Adding 0.52 of a grade in Art



ANNIE

A*, A*, A*, A* AT A LEVEL
ENGINEERING,
UNIVERSITY OF CAMBRIDGE

I appreciated having access to nature around the park at Leighton Park, as it helped me stay focused and calm during exams, as well as helping my mental health. I also valued the teachers’ inclusivity, as they encouraged me to go into STEAM subjects and organised activities to help me feel more comfortable with studying engineering at uni.



4. Brand new Sixth Form Study Centre

Be one of the first students to enjoy our new Grove Sixth Form Study Centre, with a double height library, a lecture theatre, video conferencing studio, café, common rooms, classrooms and group study hubs.

Our students already achieved the best academic progress in Berkshire – so we're excited to see what you can do in our incredible new Sixth Form Study Centre, with every detail designed to support your success. As well as providing incredible spaces to learn, this development reflects our ambitions to support you to have the skills you need to be a changemaker - with a lecture theatre for inspiring guest speakers and a video conferencing studio to enable global connections and reach.

Students benefit from:

- A stunning new double-height School Library
- Lecture theatre for up to 60 people
- A modern Sixth Form Common Room
- Group study hubs for project working
- A video conference studio
- Four beautiful new classrooms
- Four quiet study hubs
- Two roof terraces for al fresco study
- Landscaped gardens.



Find out more about
our new Sixth Form
Study Centre



5. An exceptional values-led education

Our Quaker values make us unique. We distinguish ourselves by giving them currency and purpose. Simplicity, truth, respect, integrity, peace, equality and sustainability underpin, and are obvious in, our working practice, personal relationships and daily life, as well as informing our curriculum. Leighton Park is the only school in England to have received a prestigious Significant Strength for its values-led approach by the Independent Schools Inspectorate.

Leighton Park leads the UK for its work with the local community. Examples include our Sports Leaders' Award and Literacy Ambassadors programme. Our students are trained by the Royal Institution to be Maths Mentors to work with local primary school children. You will benefit from leadership opportunities and the proven boost to personal wellbeing from helping other people, as well as developing skills and creating incredible experiences to enrich your personal statement for university and job applications. We won the national Independent Schools Association Award for Outstanding Local Community Engagement two years in a row.

Within our School, values are embedded into all interactions between students and between staff and students, with inclusivity and respect at the heart of our community. Our Student-led clubs such as SAGE, Debate Club, Eco Schools Club and Amnesty International provide students with opportunities for more formal advocacy of under-represented groups.



6. International outlook

By joining an International Baccalaureate World School, you will benefit from a cosmopolitan, international and inclusive learning environment with students from 45 different countries.

We strongly encourage students to take the Global Perspectives iGCSE. One of our values is Peace and we believe that taking the time to understand and appreciate different cultures is a prerequisite for a peaceful and prosperous future.

You will also have the opportunity to go on amazing international trips, whether related to your academic subjects, co-curricular interests, Sports or Music tours.



"I think it's been a very nurturing experience for us, the whole of Leighton Park, in all year groups. We had to move Ella away from her lovely friends and all that emotional stuff as well as starting her A Levels in a new school in a new country. Leighton Park has been so supportive; I highly recommend it, it's been incredible."

Sixth Form parent

7. An education for the individual

We’re often asked what we do to support our students to achieve such strong academic progress. The answer is simple but the implementation is less so. You will benefit from an education that is built around your needs and learning style:

- Average class size of seven students
- Small tutor groups of 11
- A culture where students support each other
- A sector-leading Individual Learning Centre to support students’ study skills
- Project-based learning with off-curriculum stimulus
- Experiential learning, including partnerships with industry and higher education
- Expansive educational trips locally, to London, Southern England and internationally.



Our **Oakleaf Diploma** celebrates the achievements of our Sixth Formers as they prepare for life beyond Leighton Park. Awarded at the end of the Lower Sixth, it teaches strong values, builds character and instils a sense of community. The ‘softer skills’ which are so necessary for success in adulthood also inspire students with a lifelong commitment to supporting others, enhancing their enjoyment of intellectual physical and social activities. Some elements of the diploma are undertaken by the individual in their own time, others are timetabled into the Sixth Form curriculum. This balance ensures that the programme is a bespoke experience ideally suited to every student. The four key elements of the Oakleaf Diploma are:

Future Readiness

Students will strengthen their independence through four units:

- Finance**
- First Aid**
- Cookery**
- Adulthood**

- Getting Dressed Up: laundry and ironing, basic mending, tying a bow tie
- Getting it Right: drafting a CV, writing formal letters, sending condolences
- Getting Around: UK travel options, planning inter-railing, booking a holiday,
- Getting Ready for Uni: staying safe, self-defence, eating and cleaning

Academic Extension

Study Skills

A professional study skills coach will deliver a series of talks offering advice and trouble-shooting techniques followed by guidance sessions by the Sixth Form leadership team.

School Supported Opportunities

The co-curricular programme supports academic extension through clubs such as Extended Project Qualification (EPQ) or Aspiring High supporting students seeking Oxbridge or competitive university course entry.

Student-led Opportunities

Online courses such as MOOCs, TED talks, a Microsoft Diploma and lectures or webinars can be pursued by students in their own time.

Ethical Changemaking (CAS)

Teaching Others

Each student will develop their ethical changemaker skills as a Literacy Ambassador helping KS2 children at a local primary school with their reading.

Learning from Others

Five inspirational talks by active changemakers dynamically engaged in making a difference to the world.

School Supported Opportunities

The co-curricular programme offers a variety of clubs enabling students to become changemakers.

Student-led Opportunities

We encourage our Sixth Formers to be conscious of the choices they make in relation to others and to the environment through the Quaker ethos, reinforced in regular Collects.

Wellbeing

Physical Education Lessons

Students have two double periods timetabled each week to gain the health and wellbeing benefits of physical activity either in competitive team sports or individual activities like swimming, judo and yoga.

Co-Curricular Programme

Sports clubs and those in the creative arts can support health and wellbeing through relaxation and provide a balance to students’ academic commitments.

Student-led Opportunities

Pursuing a passion outside school not only develops independence but builds mental resilience and lifelong friendships.

8. Sector-leading personal development

You will have access to over 90 co-curricular clubs, as well as take part in games twice a week in Sixth Form. This reflects the importance we place on balance and developing every aspect of our students. It may seem counterintuitive but our approach has demonstrated that the way to support you to achieve your best possible academic progress is by combining study with wider opportunities for personal development, fun and self-reflection. We won the ISA's Award for Excellence in Pupil Personal Development in 2022 for our approach.

There is a huge range of choice, enabling you to build your own unique programme - to learn new skills, stretch yourself and make friends for life. Of the 90 co-curricular activities around 30 are related to music and performing arts, 30 to sports and 30 to academic extension like debating and coding club.

Our Sixth Formers have the opportunity to lead co-curricular activities in the School, with current examples including Amicus, our student-led charity, Amnesty International and our Sixth Form Eco Group.

- 90+ co-curricular clubs
- Duke of Edinburgh Award Scheme
- Sport (30 options)
- Leadership and mentoring
- Music, Dance and Drama
- Academic extension
- Student-led charity
- Overseas trips



“Leighton Park has given me so many brilliant opportunities to better myself: as an academic, with the first class teaching staff and academic courses that Leighton Park offers; as a musician, with the comprehensive music programme that has taken my musical abilities from strength to strength over the last four years; and athletically, with the advanced performer programme that made me a better athlete both physically and mentally.”

Dan, Lower Sixth



Music

A Yamaha Flagship Music Education Partner and Steinberg Certified Training Centre, the Music department is one of the busiest places in the School. Over half our students study an instrument every week with one of 27 instrumental teachers. There are regular concerts and performances too with a highlight being our annual al fresco musical picnic on the park, Music for a Summer's Evening. Our strength in Music complements very strong Drama and Dance departments, with our students winning national awards across all three areas in the last two years.



Sport

We have multiple teams across key sports like football, netball, rugby, hockey, cricket, athletics, tennis, basketball and swimming, with over 30 sports available on our co-curricular programme like rock climbing, judo and table tennis. Our top athletes are supported by our Advanced Performer Programme (APP), which provides access to the Go Perform Sports Performance Centre as well as bespoke strength and conditioning programmes, sports psychology, diet and nutrition support, trips to some of the top facilities in the country and inspirational talks from leading athletes and outside speakers.



“She has had a blast and been given so many opportunities, that I genuinely don't believe she would have got anywhere else. From Year 7 all the way through to Upper Sixth, the teaching has been exemplary, the support when she has struggled, has been incredible and the leadership opportunities she has been given have been life changing and will help so much in later life.”

Sixth Form parent

9. Together we're happier (and more successful)

The starting point at Leighton Park is supporting you to think about who you are, to reflect on what is important to you and to help you find purpose in your learning. Our orientation programme and bespoke Newcomers' Day help you get up to speed quickly and feel settled. You will have the chance to go on a weekend trip at the end of your first week or two at School.

Your Tutor will be there to support you to achieve your very best every step of the way, in both academic progress and personal development. The small tutor groups of only 11 students mean you get close individual support and you will see your Tutor every day. You will have the space and personal responsibility to take charge of your learning within a supportive environment with expert advice.

Our House system gives everyone a team to be part of - with fun events, student socials and competitions to ensure that everybody in the School feels part of a vibrant community.

There are five teachers that live in each boarding house, meaning there is always someone around to help.



10. Building your future

Our students go on to some of the most sought after university programmes in the country with our Aspiring High Programme offering dedicated support, including comprehensive pathways for Oxbridge, Medicine, Law and overseas universities. Our brilliant Careers Department will be there to help you, whatever direction you want to take – drawing on the expertise of our Old Leightonian community to give you advice and tailored interview practice.

Most of our students will go to Russell Group universities but some will be best served at specialist institutions like St George's for Medicine, the University of Lancaster for Space Science, Central St Martin's for the arts and the country's leading conservatoires for music. We've got the expertise to support you every step of the way - no matter which path you choose.

Selected student destinations

University of Cambridge // Engineering x2
University of Cambridge // Linguistics
University of Oxford // Music
Imperial College London // Biological Sciences
UCL – Art and Technology
UCL // Engineering and Architectural Design
UCL // Human Sciences
UCL // Medicine
University of Warwick // Neuroscience
University of Warwick // Psychology with Education
University of Pennsylvania // Mathematics
Royal Northern Conservatoire // Music
University of Exeter // History
University of Edinburgh // Medicine
University of York // Law
University of Sheffield // Aerospace Engineering
University of Manchester // Architecture
King's College London // European Politics
Berklee College of Music // Music
London School of Economics // Accounting and Finance
Durham University // English Literature
Bournemouth University // Film
BBC // Degree Level Apprenticeship



HOW DOES THE IB DIPLOMA WORK?

The three core elements are:

- **Theory of Knowledge (TOK)**, in which students reflect on the nature of knowledge and on how we know what we claim to know
- **Extended Essay**, which is an independent, self-directed piece of research, finishing with a 4,000-word paper
- **Creativity, Activity, Service (CAS)**, in which students complete a project related to those three concepts.

The six subject groups are:

- Group 1 - Studies in language and literature
- Group 2 - Language acquisition
- Group 3 - Individuals and societies
- Group 4 - Sciences
- Group 5 - Mathematics
- Group 6 - The Arts Electives

Students will study **six subjects**, three at Standard Level and three at Higher Level. You can choose one subject from each block. With Leighton Park’s strength across STEAM subjects, it is possible to select two sciences, one from Block 4 and one from Block 6.

IBDP Option Blocks 2025-2026

The options below are routinely offered on our IB Diploma Programme. Subjects may vary year on year depending on demand. Additional options may be supported through the IBO’s Pamoja platform at an additional cost.

| Block 1 | Block 2 | Block 3 | Block 4 | Block 5 | Block 6 |
|---------------------------------------------------------------|---------------------------------------------------------------------------------------------|-----------------------------------------------------------------------------|--------------------------------------|----------------------|--------------------------------------------------------------------------------------------|
| English A (SL)(HL) Italian A (SL)(HL) German A (SL)(HL) | English B (SL)(HL) French B (SL) Spanish Ab Initio (SL) Spanish B (SL) | Global Politics (SL)(HL) History (SL)(HL) Psychology (SL)(HL) | Biology (SL)(HL) Physics (SL) | Mathematics (SL)(HL) | Chemistry (HL) Economics (SL)(HL) Music (SL)(HL) Visual Arts (SL)(HL) |

(SL) - Subject is available at Standard Level
(HL) - Subject is available at Higher Level

Find out more



Find out more about our subject options in our course finder



Explore Psychology



Explore Economics



THE LEIGHTON PARK A LEVEL CURRICULUM

Typically, three A Levels are chosen. Four A Levels may be chosen if Further Mathematics is one of them (for example, Further Mathematics, Mathematics, Physics and Economics), or in exceptional circumstances in other subjects and in agreement with our Head of Sixth Form. Students may be able to take a modern foreign language as an IB Module (See Block 2 on page 28), in addition to their three A Level courses - enabling students to develop their language skills and gain more UCAS points to support their university applications.

Only one subject may be chosen from each subject block below, with a maximum of four from Blocks A to D. Changes may be made within blocks after initial choices are made, subject to availability. The blocks below are based on the current year and may be refined following a consultation process with our Year 11 students.

| Block A | Block B | Block C | Block D |
|----------------------------|-------------------|------------|-------------------------------|
| Art | Biology | Business | Chemistry |
| Biology | Chemistry | Geography | Dance |
| Business | Chinese** | Maths | Digital Film & TV Production* |
| Drama | Computer Science | Music | Economics |
| History | Design Technology | Physics | Further Maths |
| Maths | Economics | Politics | Physics |
| Sport & Physical Activity* | English | Psychology | Psychology |
| | Geography | | Religious Studies |
| | Maths | | |
| | Music Technology | | |

*Leighton Park offers two technical qualifications alongside the A Level Programme. These subjects provide students with opportunities to develop practical, creative and leadership skills, complimenting the academic focus of A Levels:

- CTEC Sport
- BTEC Digital Film & TV Production

** Chinese is available for native speakers only

A Level students at Leighton Park are strongly encouraged to undertake the Extended Project Qualification (EPQ). This independent research project is worth half an A Level and enables students to pursue an interest that may not be covered within the syllabus of their selected A Level subjects.



Explore Business



Explore CTEC Sport



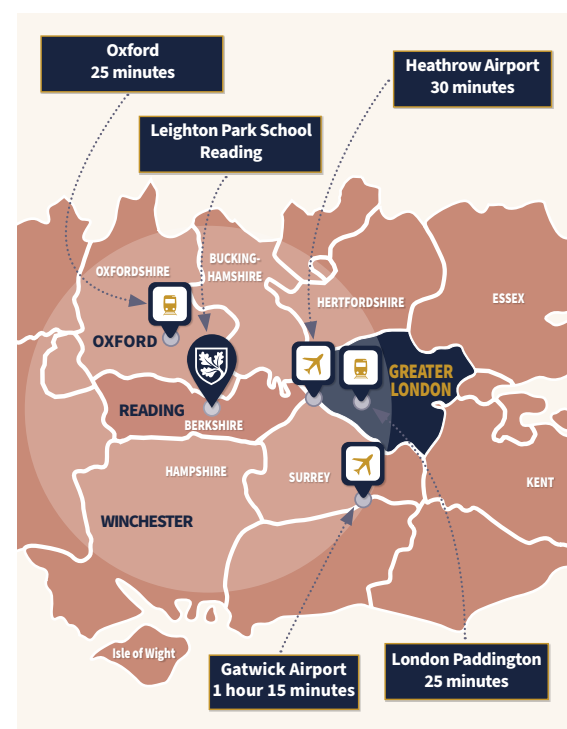
Explore Politics



OUR LOCATION

Our location, 25 minutes from London, close to Oxford and the South Coast, and surrounded by some of the most historic and picturesque countryside in England, creates unrivalled opportunities for students to extend and contextualise their learning.

- London Paddington - 25 minutes
- Oxford - 25 minutes
- London Heathrow Airport - 30 minutes
- London Gatwick Airport - 1 hour, 15 minutes



REGULAR UK TRIPS INCLUDE:

- National Theatre, Sadler's Wells and West End shows for English, Drama and Dance
- Tate Modern, National Gallery and other Art exhibitions for Art, Textiles and DT
- British Museum and Chinatown for Mandarin South Wales and Devon for Geography
- Orielton, Pembrokeshire for Biology The Chilterns, the South Downs and Dorset for DofE
- Theme Park visits to Thorpe Park for Physics and for fun!

ACCOLADES

We have won a number of awards recognising the strength and success of our approach:



Senior School of the Year 2023-24

Future Readiness Award Winner 2024-25

**National leader for Pupil Personal Development,
winning the ISA Award for Excellence 2022**



Recognised for exceptional pastoral care, achieving the Wellbeing Award for Schools 2022-2025, accredited by the National Children's Bureau

**Awarded Best Co-Ed School 2022
South East England**

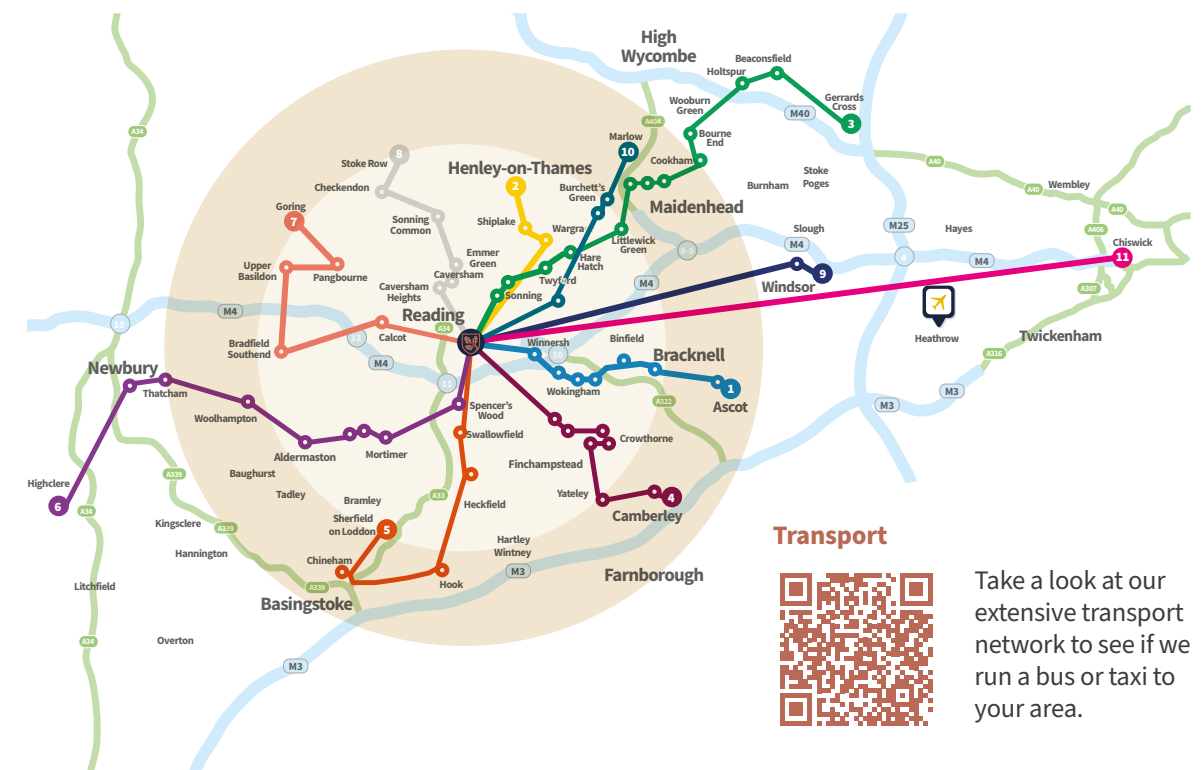
**Best performing school in Berkshire and 14th
among boarding schools in the UK's Government
league table for Sixth Form progress**



School celebrated by ISI for 'Significant strength': Our Values, in report published January 2025

**Independent Schools Association Award for
Outstanding Local Community Involvement in
both 2021 and 2020**

TRANSPORT



FEES 2025/2026

| | UK | EEA | NON-EEA |
|------------------------|-------|-------|----------------|
| Registration Fee (£) | 150 | 150 | 225 |
| Acceptance Deposit (£) | 1,500 | 5,000 | One term's fee |

Students who do not have a UK or EEA passport and who need a study visa will be charged an extra £480 each term to cover visa costs and compliance. This charge will be added to their school bill.

UK/EEA Fees (£)

| | | |
|--------------------|--------|--------------------------|
| Sixth Form | | |
| Full Boarder (£) | 55,980 | (18,660 per term) |
| Weekly Boarder (£) | 47,310 | (15,770 per term) |
| Day Student (£) | 34,470 | (11,490 per term) |

Supplementary Fees

| | |
|-------------------------------------|-------------------------------|
| Flexi Boarding Sixth Form per night | £90 (subject to availability) |
| Music Tuition per session | £45 |

A full breakdown of all charges, including transport, Individual Learning Centre, the Digital Device Scheme and English as an Additional Language is available on our website at www.leightonpark.com/school-fees/



Find out more
about our
inclusive fee
structure.

